

For **WATERPROOFED ROOFS OR EXISTING UPSTANDS**

# SKYCLAIR® MULTIFACES

CE  
EN 1873 + A1: 2016



**VERSION**



## Filling

### THERMIK' RANGE:

- PCA 16
- PCA 32
- Acoustik' Light



## Upstand

- Insulated upstand
- 1.2 mm galvanised steel upstand

### THERMIK' RANGE:

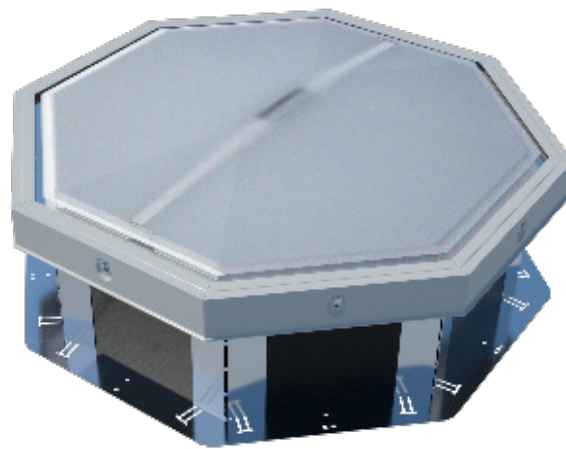
- Height 360 mm with 30 mm bituminous insulating coating



## Side

- 8 or 12 sides depending on product size

The SKYCLAIR® MULTIFACES is a skylight intended for waterproofed flat roofs on all types of buildings (including public facilities, work premises and industrial buildings).



Also available:



## OPTIONS



### Types of filling

- Opal PCA 16 IR
- Grey PCA 16
- Transparent PCA 16



### Upstand

- Upstand height: 410 mm or up to 590 mm
- Colaminated or galvanised sheet steel top for PVC waterproofing
- Bare insulation for PVC waterproofing



### Other information

- 16 x 16 mm non-1200 joule square tube grid
- Upstand lacquered in RAL colour

## Available versions



## Dimensions

SKYDÔME® MULTIFACES			
Opening dimensions Interior Ø A (mm)	Opening dimensions Exterior Ø B (cm)	Number of sides	Light surface (m <sup>2</sup> )
850	1030	8	0.60
900	1080	8	0.67
1000	1180	8	0.83
1100	1280	8	1.00
1200	1380	8	1.19
1300	1480	8	1.40
1400	1580	12	1.58
1500	1680	12	1.81
1600	1780	12	2.06
1700	1880	12	2.32
1800	1980	12	2.60

## Filling performance

Other filling and filling options: see "Filling" data sheet.

Type of filling	Thermal transmittance factor Ug (W/ m <sup>2</sup> .K)	LT D65 <sup>(2)</sup>	SF or g <sup>(2)</sup>	Reaction to fire	R <sub>w</sub> (dB) <sup>(3)</sup>	
	U <sub>hor</sub> <sup>(1)</sup>					
PCA	Opal multi-wall PCA 16	1.9	45%	46%	B-s1-d0	R <sub>w</sub> =21 dB
	Opal multi-wall PCA 20	1.6	54%	47%	B-s2-d0	R <sub>w</sub> =21 dB
	Transparent multi-wall PCA 32	1.3	33%	49%	B-s2-d0	ND
Acoustik' Light	Acoustik' Light Transparent PCA 10 & transparent PCA 6	2.1	ND	ND	ND	R <sub>w</sub> =27 dB

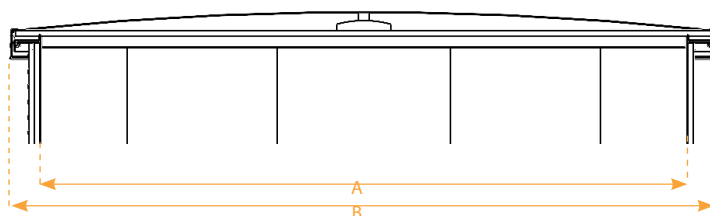
<sup>(1)</sup>As per §2.31 of the Th-Bat regulations.

<sup>(2)</sup> Light transmittance LT D65 and total solar transmittance SF (TST or g) as per EN 410.

<sup>(3)</sup> Filling insulated against airborne noise R<sub>w</sub>, pink noise R<sub>k</sub> (environment, airport and industrial activities) and road noise R<sub>A1</sub>, laboratory-measured according to NF EN ISO 140.

## Technical diagrams

### THERMIK' range SKYCLAIR MULTIFACES



## Trade name

Trade name		Filling	Upstand insulation
SKYCLAIR MULTIFACES	THERMIK' 16	16 mm PCA (Opal PCA)	Upstand height: 360 mm Insulation: <ul style="list-style-type: none"> <li>• on vertical part of upstand</li> <li>• on upstand lip</li> </ul>
	THERMIK' 32	32 mm PCA (Transparent PCA)	
	THERMIK' 20	20 mm PCA (Opal PCA)	
	THERMIK' ACOUSTIK' LIGHT	10 mm PCA + 6 mm solid PC	

## COMPLIANCE & INSTALLATION

Compliant with EU standard **NF EN 1873**.

The product must be fastened and sealed in accordance with the requirements defined in the applicable DTU specifications (series 40 and 43).

Maximum insulation height: as per the DTUs, the sealing flashing must extend to a height of at least 150 mm.

For the THERMIK' range, the waterproofing complex (substrate, vapour barrier, insulation and two-layer sealant) must be no thicker than 125 mm for an interior upstand height of 310 mm, 175 mm for an interior upstand height of 360 mm, or 225 mm for an interior upstand height of 410 mm.

Maximum permissible slope: 25° or 46% (see installation instructions).

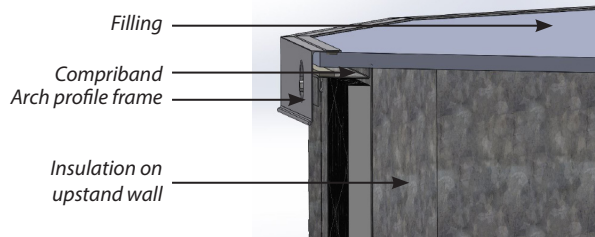
Only the security bar option provides guaranteed 1200 joule protection.

**DoP available at [www.skydome.eu](http://www.skydome.eu)**

**Product  $U_{RC}$ : 1.4 W/m<sup>2</sup>.K\***

**ENHANCED THERMAL INSULATION**

- ✓ **Range of filling options** with different thermal insulation, light transmittance and solar factor performance
- ✓  **$U_{RC} = 1.4 \text{ W/m}^2.\text{K}^*$**
- ✓ **Compliant with applicable DTU specifications**
- ✓ **Superior watertightness**



**Thermal performance:  $U_{RC}$  (W/m<sup>2</sup>.K) and  $A_{RC}$  (m<sup>2</sup>)**

SKYCLAIR® MULTIFACES								
Dimensions (mm)	Upstand height: 360 mm				Upstand height: 410 mm			
	$U_{RC}$			$A_{RC}$	$U_{RC}$			$A_{RC}$
	Acoustik' Light	PCA 16	PCA 32		Acoustik' Light	PCA 16	PCA 32	
850	1.9	1.7	1.5	2.1	1.7	1.6	1.5	2.1
900	1.9	1.7	1.5	2.2	1.7	1.6	1.5	2.2
1000	1.9	1.7	1.5	2.5	1.7	1.6	1.5	2.5
1100	1.9	1.7	1.5	2.8	1.7	1.6	1.5	2.8
1200	1.9	1.7	1.5	3.1	1.7	1.6	1.4	3.1
1300	2	1.7	1.5	3.5	1.7	1.6	1.4	3.5
1400	1.9	1.7	1.5	3.7	1.8	1.6	1.5	3.7
1500	1.9	1.7	1.5	4.1	1.8	1.6	1.5	4.1
1600	1.9	1.7	1.5	4.5	1.8	1.6	1.5	4.5
1700	1.9	1.7	1.5	4.9	1.8	1.6	1.5	4.9
1800	1.9	1.7	1.5	5.3	1.8	1.6	1.5	5.3

\* For an 1800 mm unit with a 410 mm high upstand and PCA 32 filling



---

## **SKYDÔME**

Entre Deux Villes  
02270 Sons-Et-Ronchères, France  
Tel: +33 (0)3 23 21 79 90  
Email: [info@skydome.eu](mailto:info@skydome.eu)  
[www.skydome.eu](http://www.skydome.eu)

For the product range in other countries, please contact your local representative or visit [www.skydome.eu](http://www.skydome.eu).

SKYDÔME reserves the right to modify product specifications without notice. The information and technical details contained in this documentation are provided in good faith and apply to the uses described. The recommendations for use must be checked to ensure they are appropriate and comply with the actual requirements, the specifications and all applicable legislation and regulations.

For other applications and conditions of use, please contact our technical team. Their advice must be sought concerning uses of our products that are not described specifically herein.

Click this link to check that you are seeing the most up-to-date and accurate information about our products:  
[https://www.skydome.eu/fr/produit/107\\_skyclair-multifaces-8-12.html](https://www.skydome.eu/fr/produit/107_skyclair-multifaces-8-12.html)

For **WATERPROOFED ROOFS OR EXISTING UPSTANDS**

# SKYCLAIR® MULTIFACES

CE  
EN 1873 + A1: 2016



## Filling

**ORIGIN' RANGE:**  
• PCA 10



## Upstand

- Insulated upstand
- 1.2 mm galvanised steel upstand

**ORIGIN' RANGE:**

- Height 310 mm with a 15 mm bituminous insulating coating



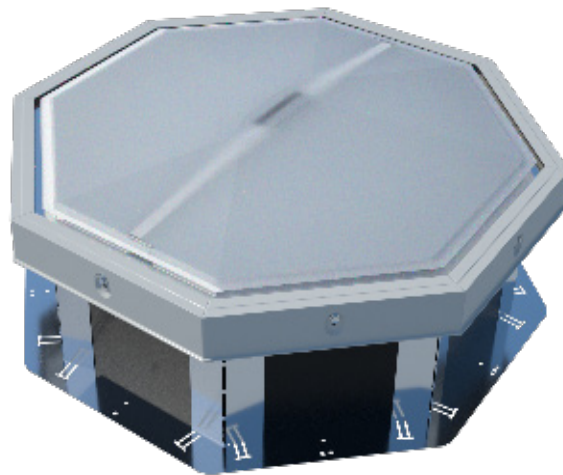
## Sides

- 8 or 12 sides depending on product size



## VERSION

The SKYCLAIR® MULTIFACES is a skylight intended for waterproofed flat roofs on all types of buildings (including public facilities, work premises and industrial buildings).



Also available:



## OPTIONS



### Types of filling

- Opal PCA 10 IR
- Black and white opaque PCA 10
- Transparent PCA 10



### Upstand

- Upstand height: 310 mm, 360 mm, 410 mm or up to 590 mm
- Colaminated or galvanised sheet steel top for PVC waterproofing
- Bare insulation for PVC waterproofing



### Other information

- 16 x 16 mm 1200 joule square tube grid
- Upstand lacquered in RAL colour

## Available versions



## Dimensions & performance

SKYDÔME® MULTIFACES			
Opening dimensions Interior Ø A (mm)	Opening dimensions Exterior Ø B (cm)	Number of sides	Light surface (m <sup>2</sup> )
850	1030	8	0.60
900	1080	8	0.67
1000	1180	8	0.83
1100	1280	8	1.00
1200	1380	8	1.19
1300	1480	8	1.40
1400	1580	12	1.58
1500	1680	12	1.81
1600	1780	12	2.06
1700	1880	12	2.32
1800	1980	12	2.60

## Filling performance

Other filling and filling options: see "Filling" data sheet.

Type of filling	Thermal transmittance factor Ug (W/ m <sup>2</sup> .K)	LT D65 <sup>(2)</sup>	SF or g <sup>(2)</sup>	Reaction to fire	R <sub>w</sub> (dB) <sup>(3)</sup>	
	U <sub>hor</sub> <sup>(1)</sup>					
Domes	Opal 4-wall PCA 10	2.9	61%	61%	B-s1-d0	R <sub>w</sub> =19 dB
	Transparent 4-wall PCA 10	2.9	68%	65%	B-s1-d0	R <sub>w</sub> =19 dB
	Opal IR 4-wall PCA 10	2.7	47%	51%	B-s1-d0	R <sub>w</sub> =17 dB
	Grey 4-wall PCA 10	2.7	0%	ND	B-s2-d0	ND
Cover	40 mm aluminium cover	0.85	0%	ND	ND	ND

<sup>(1)</sup>Relative to the horizontal, as per §2.31 of the Th-Bat regulations.

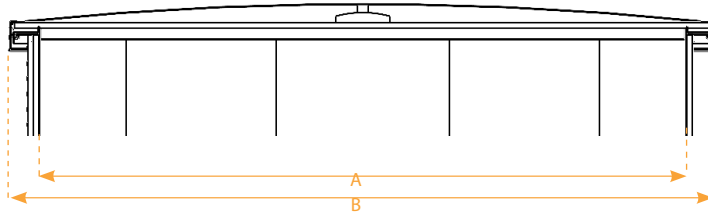
<sup>(2)</sup>Light transmittance LT D65 and solar transmittance SF (TST or g) as per EN 410.

<sup>(3)</sup>Filling insulated against airborne noise R<sub>v</sub>, pink noise R<sub>a</sub> (environment, airport and industrial activities) and road noise R<sub>av</sub>, laboratory-measured according to NF EN ISO 140.



## Technical diagrams

### ORIGIN' range SKYCLAIR MULTIFACES



#### FOR RENOVATION AND COMPLIANCE WORKS

SKYCLAIR® MULTIFACES is available in an upstandless (SC) version for renovation projects.

#### COMPLIANCE & INSTALLATION

Compliant with EU standard **NF EN 1873**.

The product must be fastened and sealed in accordance with the requirements defined in the applicable DTU specifications (series 40 and 43).

Maximum insulation height: as per the DTUs, the sealing flashing must extend to a height of at least 150 mm.

The waterproofing complex (substrate, vapour barrier, insulation and two-layer sealant) must be no thicker than 140 mm for an interior upstand height of 310 mm, or 240 mm for an interior upstand height of 410 mm.

Maximum permissible slope: 25° or 46% (see installation instructions).

**DoP available at [www.skydome.eu](http://www.skydome.eu)**

---

## **SKYDÔME**

Entre Deux Villes  
02270 Sons-Et-Ronchères, France  
Tel: +33 (0)3 23 21 79 90  
Email: [info@skydome.eu](mailto:info@skydome.eu)  
[www.skydome.eu](http://www.skydome.eu)

For the product range in other countries, please contact your local representative or visit [www.skydome.eu](http://www.skydome.eu).

SKYDÔME reserves the right to modify product specifications without notice. The information and technical details contained in this documentation are provided in good faith and apply to the uses described. The recommendations for use must be checked to ensure they are appropriate and comply with the actual requirements, the specifications and all applicable legislation and regulations.

For other applications and conditions of use, please contact our technical team. Their advice must be sought concerning uses of our products that are not described specifically herein.

Click this link to check that you are seeing the most up-to-date and accurate information about our products:  
[https://www.skydome.eu/fr/produit/107\\_skyclair-multifaces-8-12.html](https://www.skydome.eu/fr/produit/107_skyclair-multifaces-8-12.html)